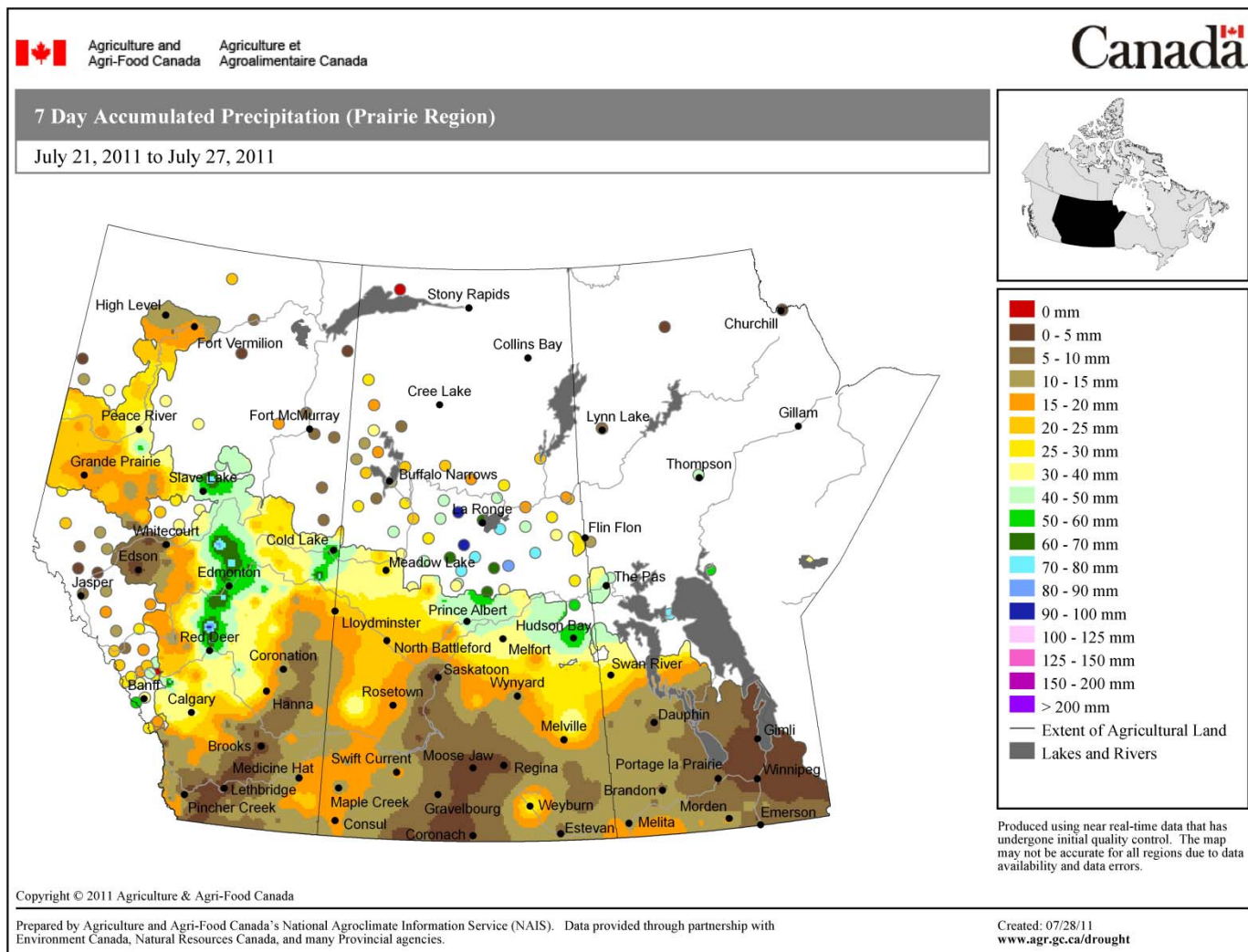
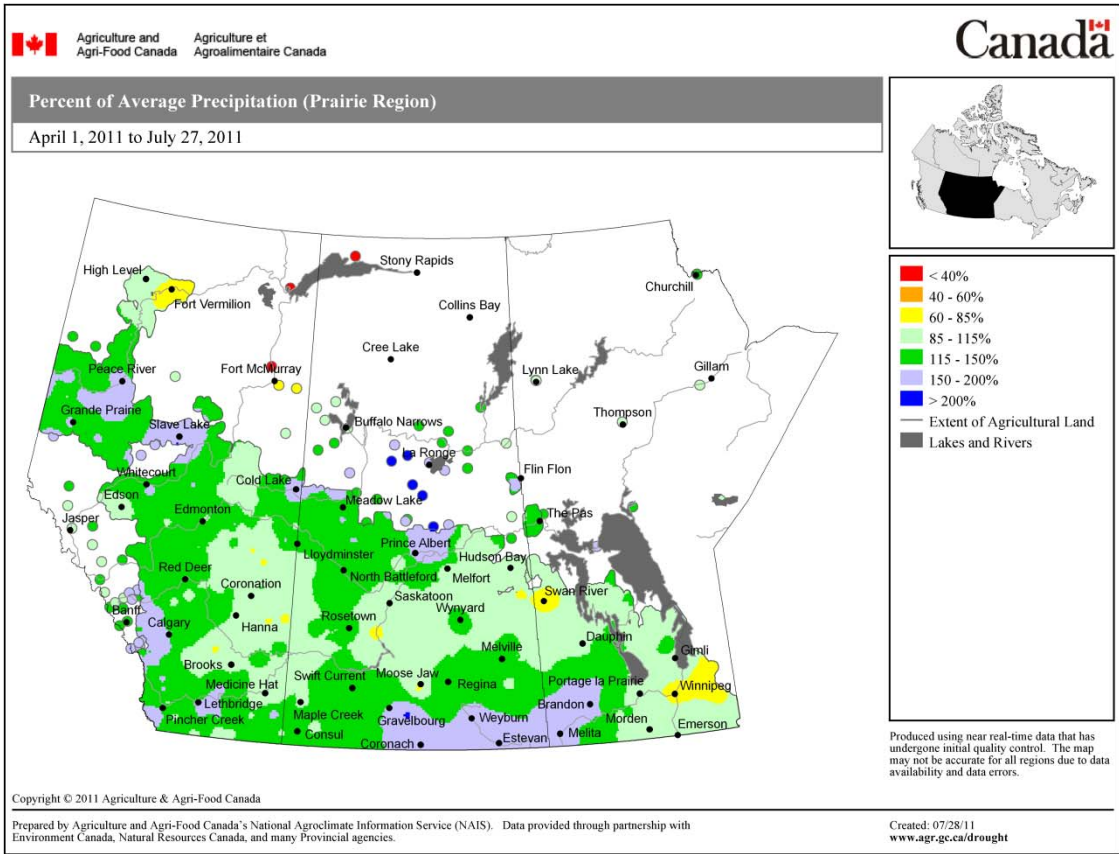


**Prairie Pest Monitoring Network Weekly Updates – July 25-29, 2011**  
**Weiss, Olfert, Giffen, Dolatre – AAFC Saskatoon & Otani – AAFC Beaverlodge**

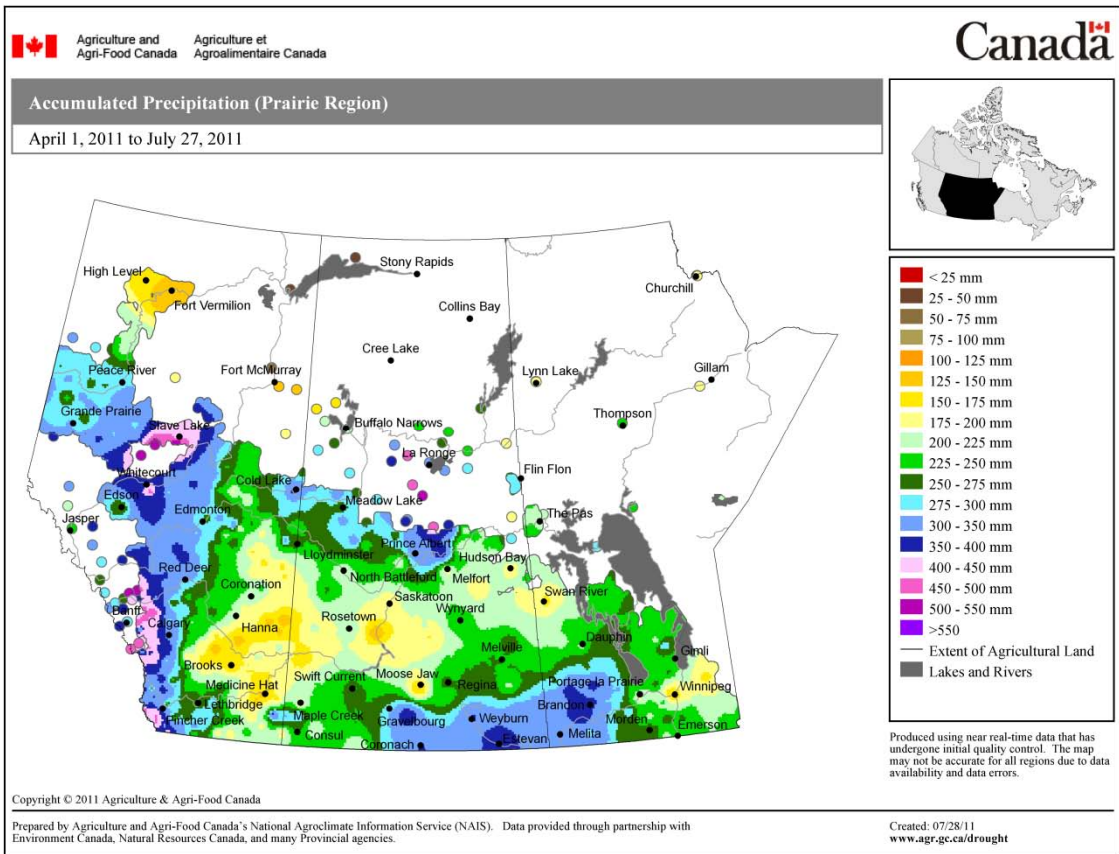
1. **Brief Weekly Update** - Staff with AAFC-Saskatoon and AAFC-Beaverlodge were processing this week so again it's a brief Update this week.
2. **Weather synopsis** – Here's the rainfall over the past week.....



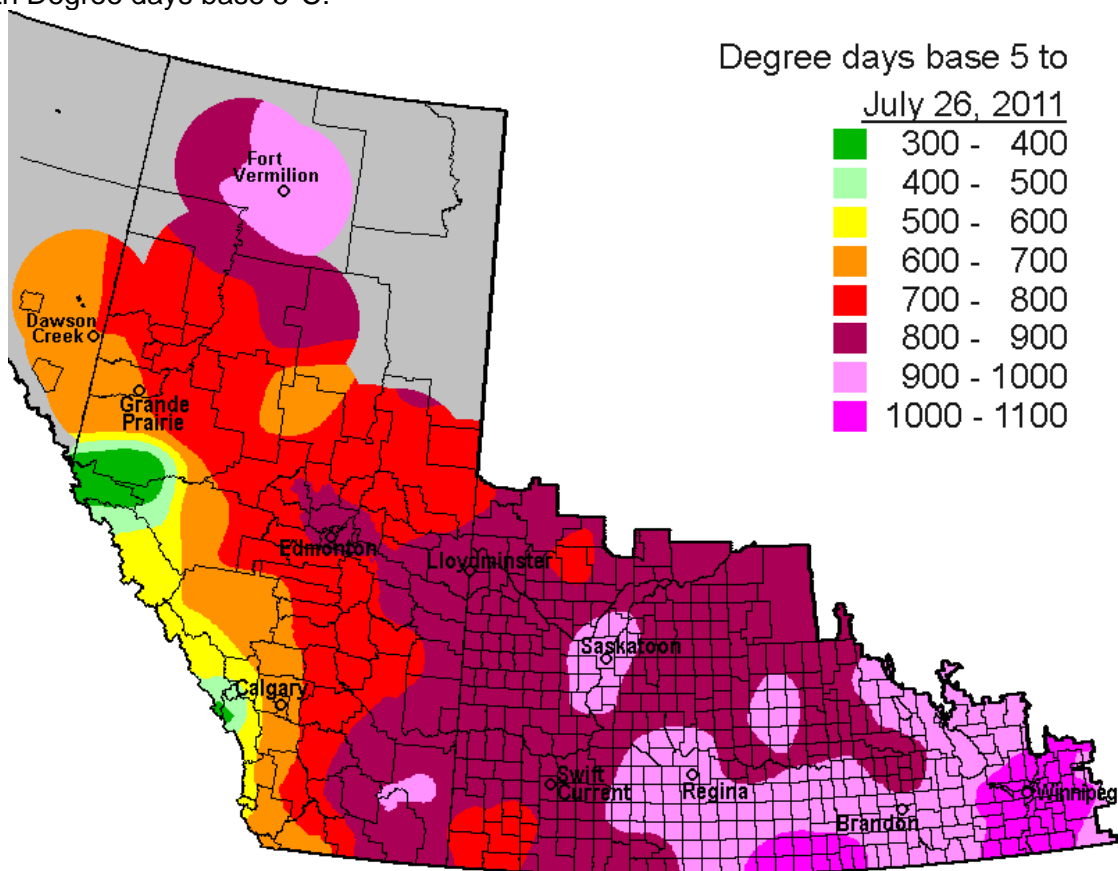
Here's the **Percent of Average Precipitation** (Apr 01- Jul 27, 2011) map for the Prairies...



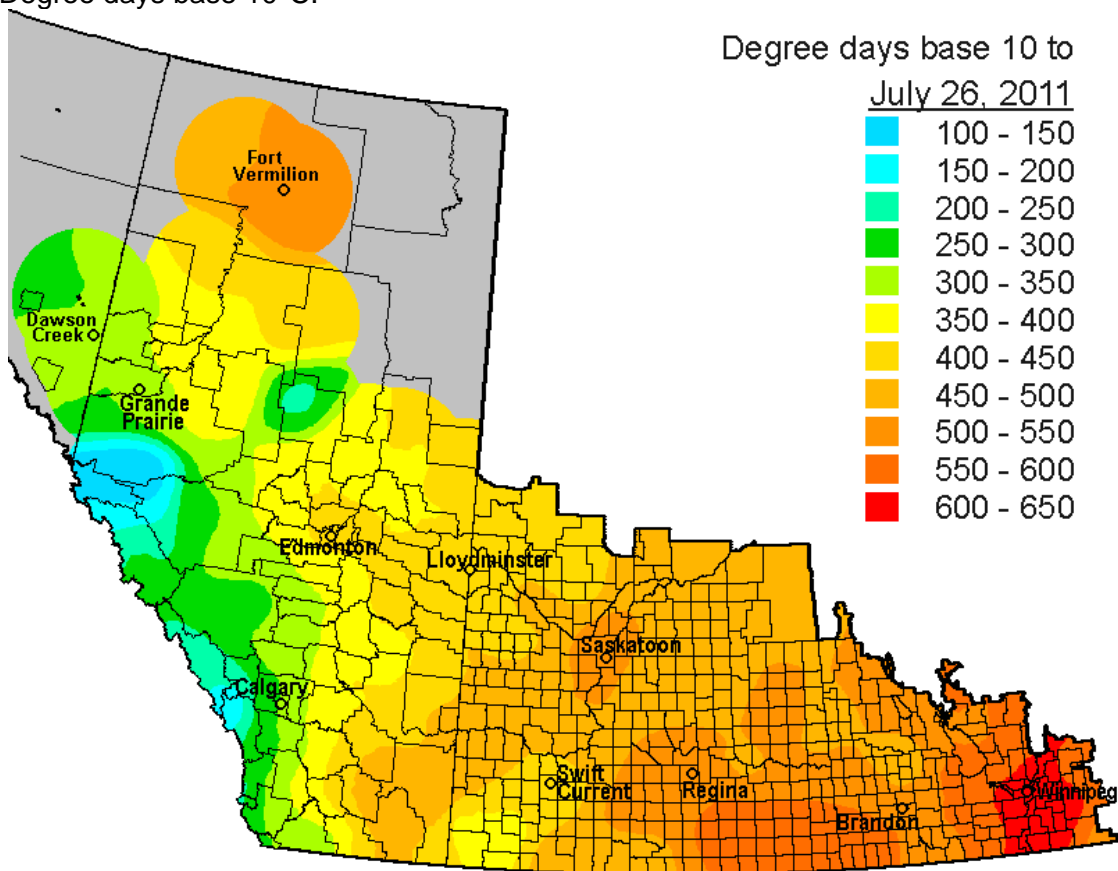
Whereas this is the **accumulated rainfall** received between April 1-July 27, 2011.....



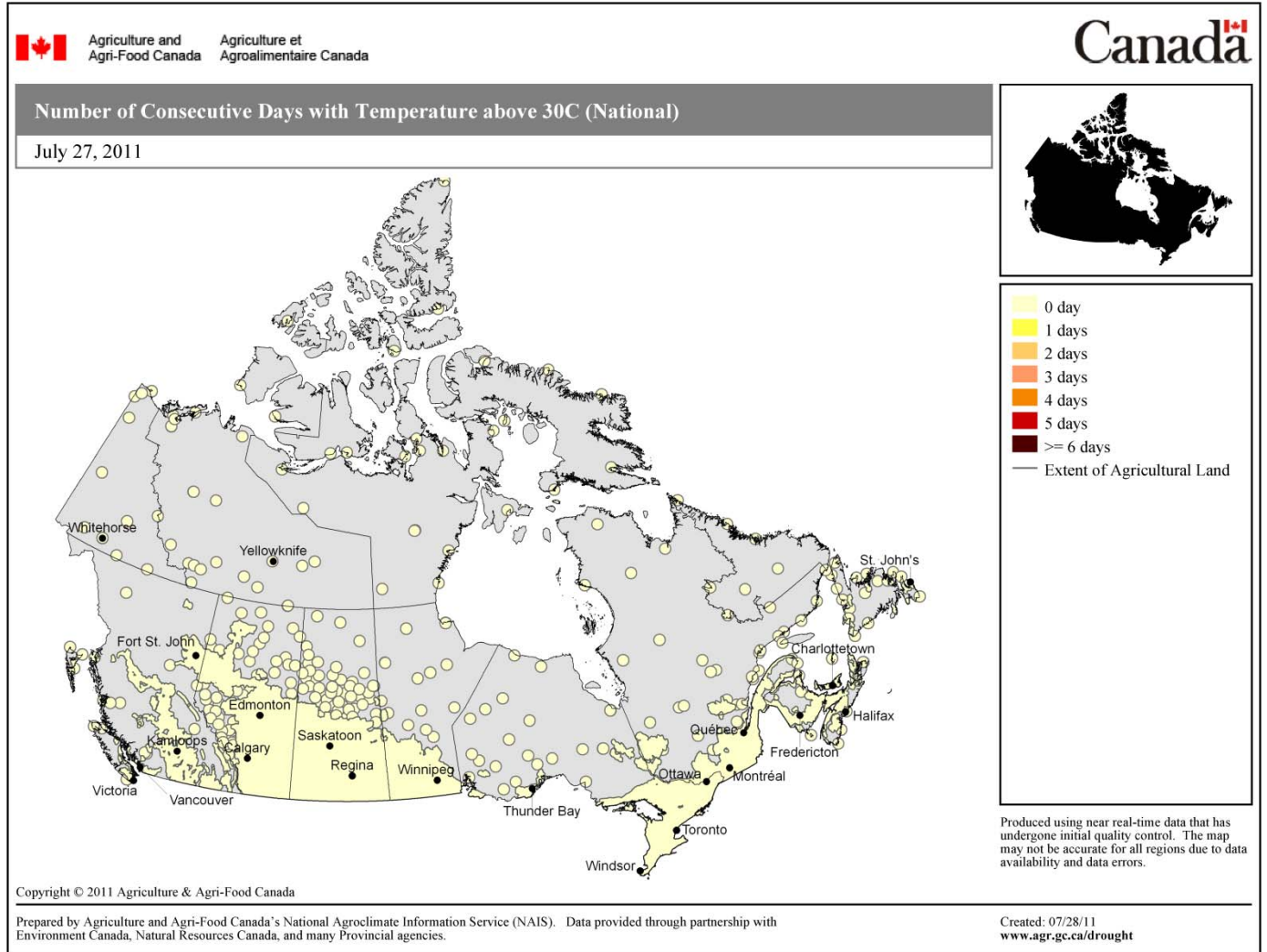
This is an update on the growing season in terms of **heat units**. Here are the maps for across the prairies starting with Degree days base 5°C:



....and for Degree days base 10°C:

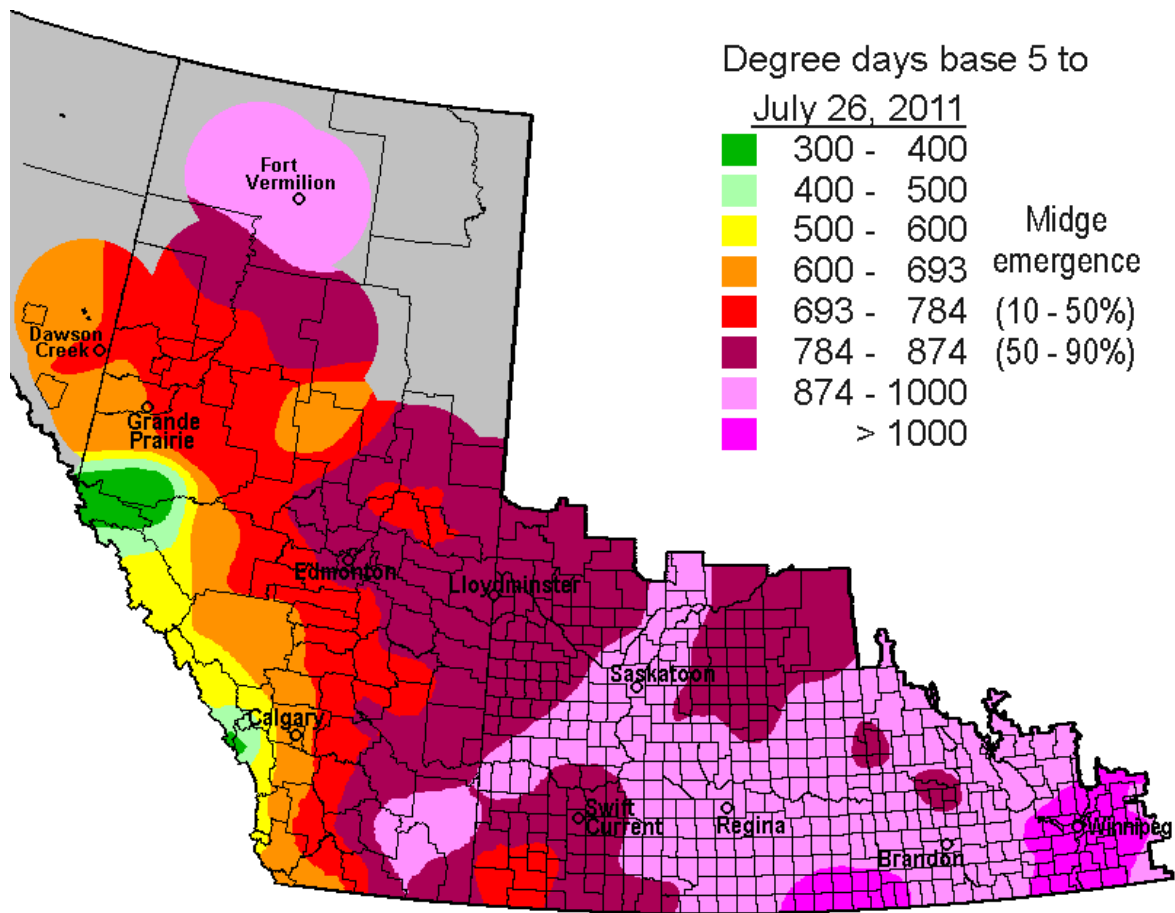


And this is map shows the number of **Consecutive Days with Temperatures Above 30°C** across the country....



3. **Wheat Midge** (*Sitodiplosis mosellana*). Here's the updated map below – again, 10%, 50% and 90% emergence of adult wheat midge should occur after 693, 784 and 874 degree-days (base 5°C), respectively. Areas including the red and purple portions of the map below indicate where sufficient heat units have accumulated for wheat midge to emerge as of July 19, 2011.



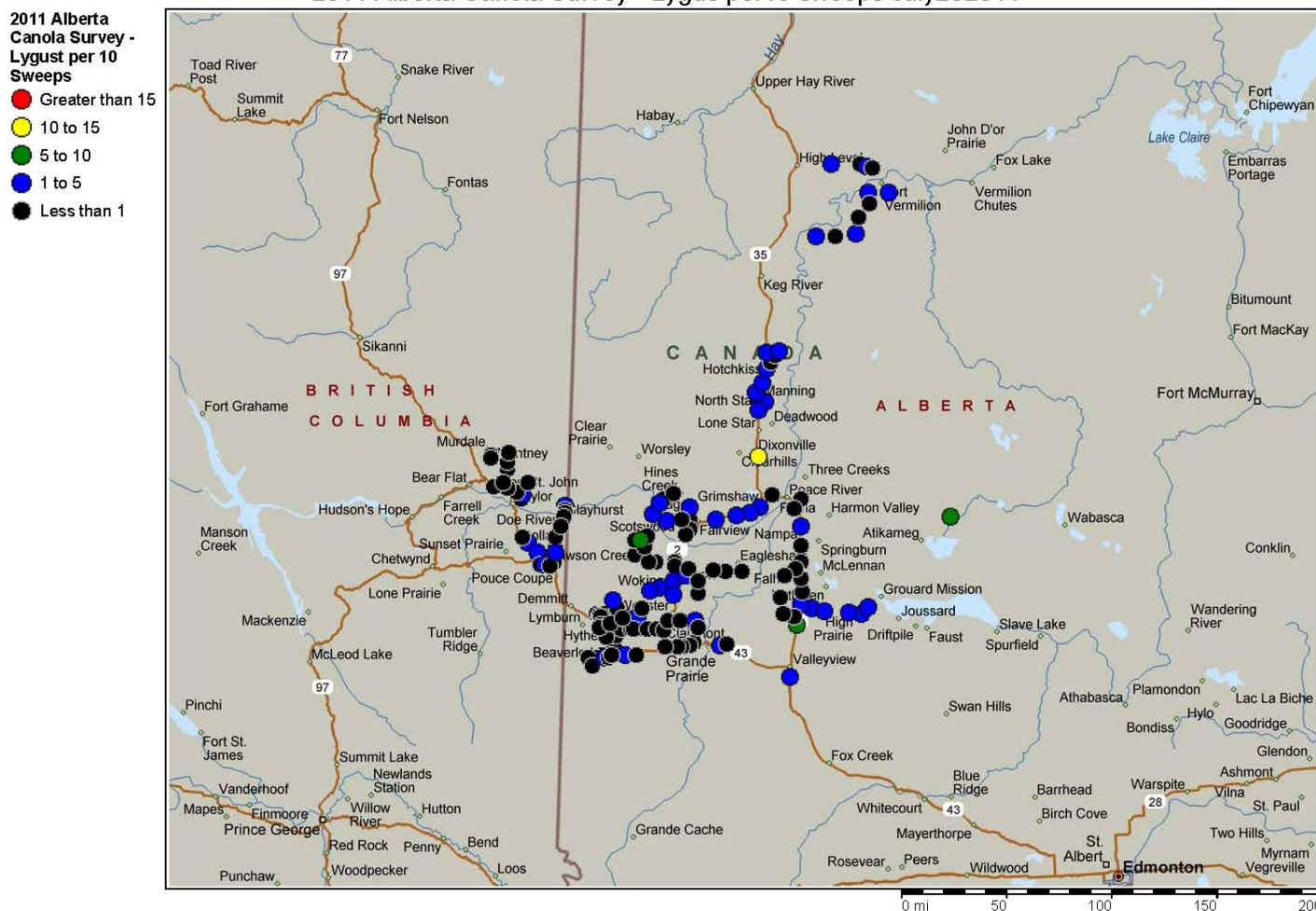


4. **Cabbage seedpod weevil** (*Ceutorhynchus obstrictus*). Staff at AAFC-Beaverlodge reported zero cabbage seedpod weevil in the 155 fields sweep-net sampled across the Peace River region between July 6-20, 2011.

5. **Canola Surveying** – The 2011 Peace Canola Survey is completed and samples (N=155 sites; 50 sweeps per field) have been processed. Continued rain interfered and delayed surveying so canola stages ranged from bolting to early pod stages but the average crop stage was mid-flowering (4.2 using Harper and Berkenkamp 1975). This year eight of 155 sites surveyed were *B. rapa* while the balance were *B. napus* cultivars. Samples showed relatively low pest incidence across the entire Peace Region:

- **Bertha armyworm larvae** (2<sup>nd</sup>-3<sup>rd</sup> instar larval stages) were collected in only six sites of the 155 sampled (Dow River BC, Woking AB, Donnelly AB, FortVermilion AB, High Level AB, LaCrete AB).
- **Grasshoppers** were present at several sites between Fairview, Grimshaw, DeBolt, Manning, and Whitemud Crossing with 4<sup>th</sup>-5<sup>th</sup> instar nymphs and adults present. Redlegged, two-striped, lesser migratory, clearwinged and a few slant-faced species were collected at these sites during surveying.
- **Lygus bug** densities were low at all sites (see map below) but monitoring remains important as stands enter the early pod stages across the Peace River region.

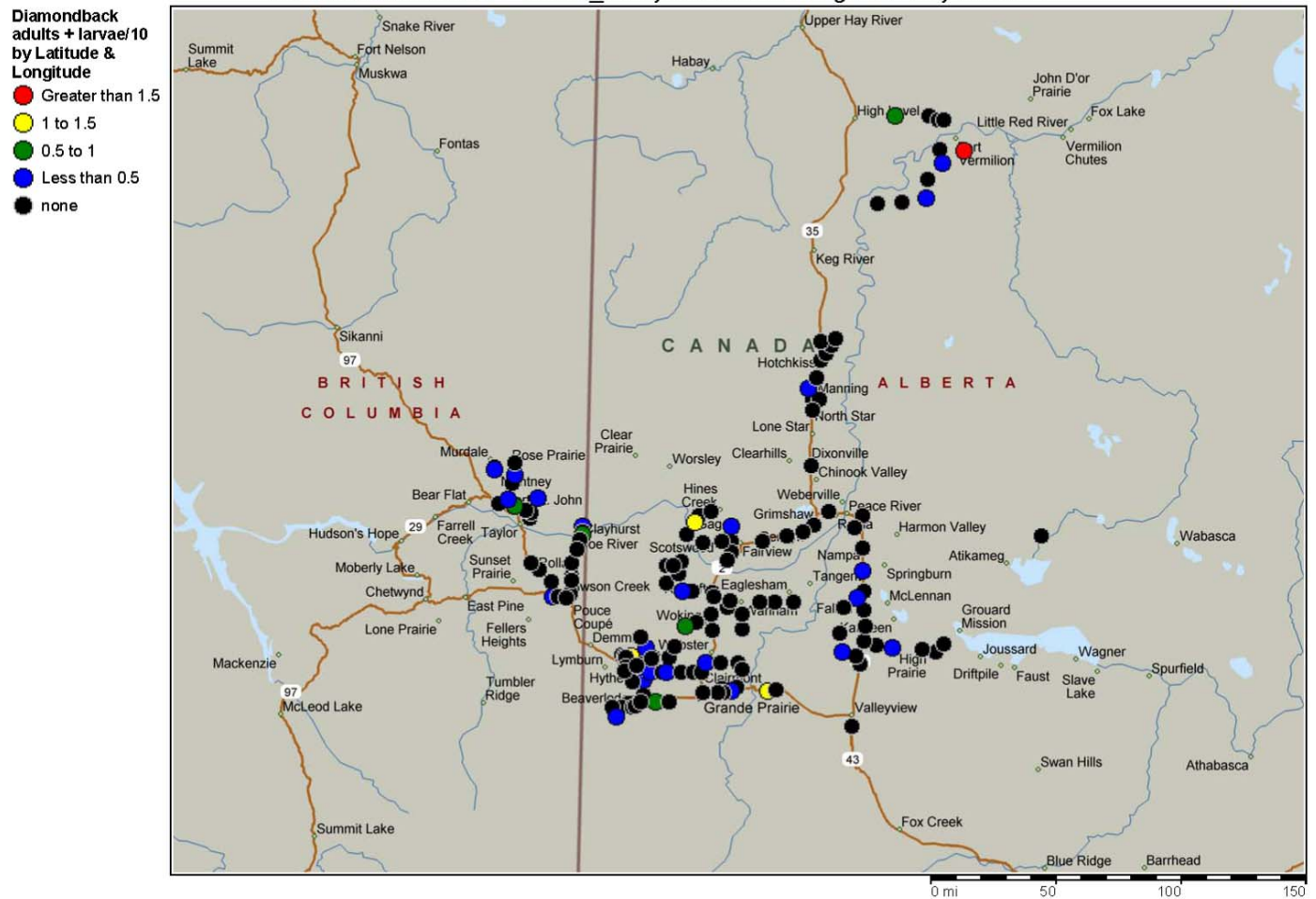
2011 Alberta Canola Survey - Lygus per10 sweeps July292011



Copyright © and (P) 1988–2006 Microsoft Corporation and/or its suppliers. All rights reserved. <http://www.microsoft.com/mappoint/>  
 Portions © 1990–2005 InstallShield Software Corporation. All rights reserved. Certain mapping and direction data © 2005 NAVTEQ. All rights reserved. The Data for areas of Canada includes information taken with permission from Canadian authorities, including: © Her Majesty the Queen in Right of Canada, © Queen's Printer for Ontario. NAVTEQ and NAVTEQ ON BOARD are trademarks of NAVTEQ. © 2005 Tele Atlas North America, Inc. All rights reserved. Tele Atlas and Tele Atlas North America are trademarks of Tele Atlas, Inc.

- **Diamondback moth larvae and adults** were collected in low numbers at several sites (refer to map below), however, DBM are problematic at the early pod stages so monitoring could still prove important.

Diamondback adults + larvae\_10 by Latitude & Longitude July 29 2011



Copyright © and (P) 1988–2006 Microsoft Corporation and/or its suppliers. All rights reserved. <http://www.microsoft.com/mapoint/>  
 Portions © 1990–2005 InstallShield Software Corporation. All rights reserved. Certain mapping and direction data © 2005 NAVTEQ. All rights reserved. The Data for areas of Canada includes information taken with permission from Canadian authorities, including: © Her Majesty the Queen in Right of Canada, © Queen's Printer for Ontario. NAVTEQ and NAVTEQ ON BOARD are trademarks of NAVTEQ. © 2005 Tele Atlas North America, Inc. All rights reserved. Tele Atlas and Tele Atlas North America are trademarks of Tele Atlas, Inc.

6. **West Nile Virus** (*Culex tarsalis*). Below is the degree-day map David Giffen produced for the health agencies indicating the regions of the prairies most advanced in relation to heat accumulations for *Culex tarsalis*. Areas in orange on the map below are on the verge of accumulating sufficient for *Culex tarsalis* adults.

