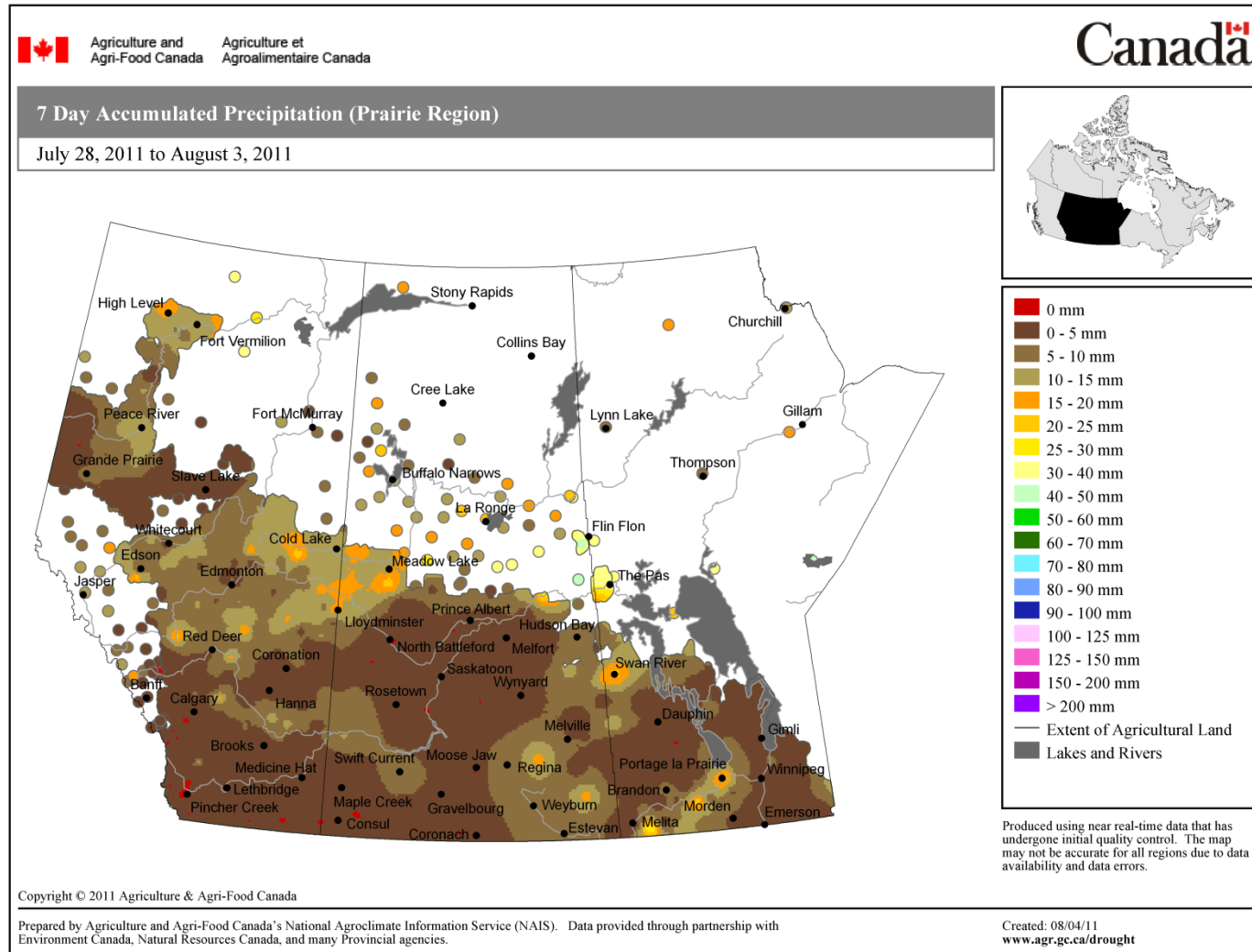
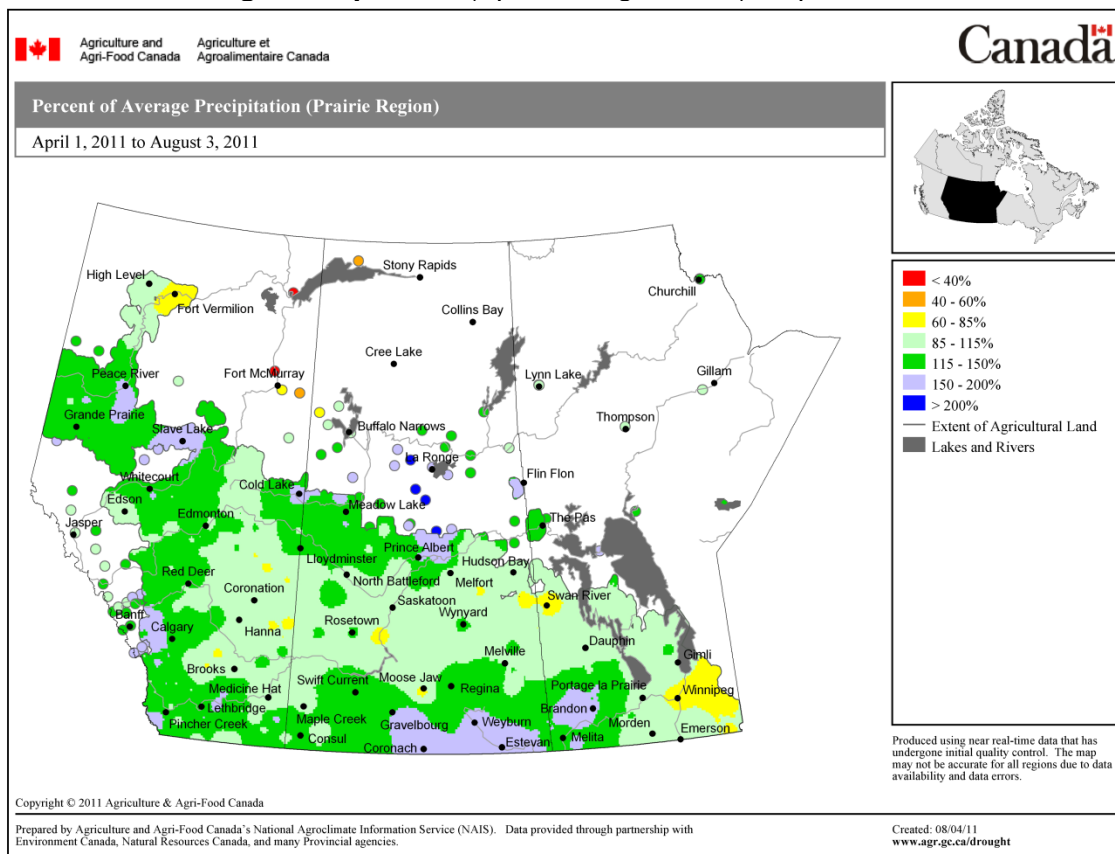


**Prairie Pest Monitoring Network Weekly Updates – August 2-5, 2011**  
**Weiss, Olfert, Giffen, Dolatre – AAFC Saskatoon & Otani – AAFC Beaverlodge**

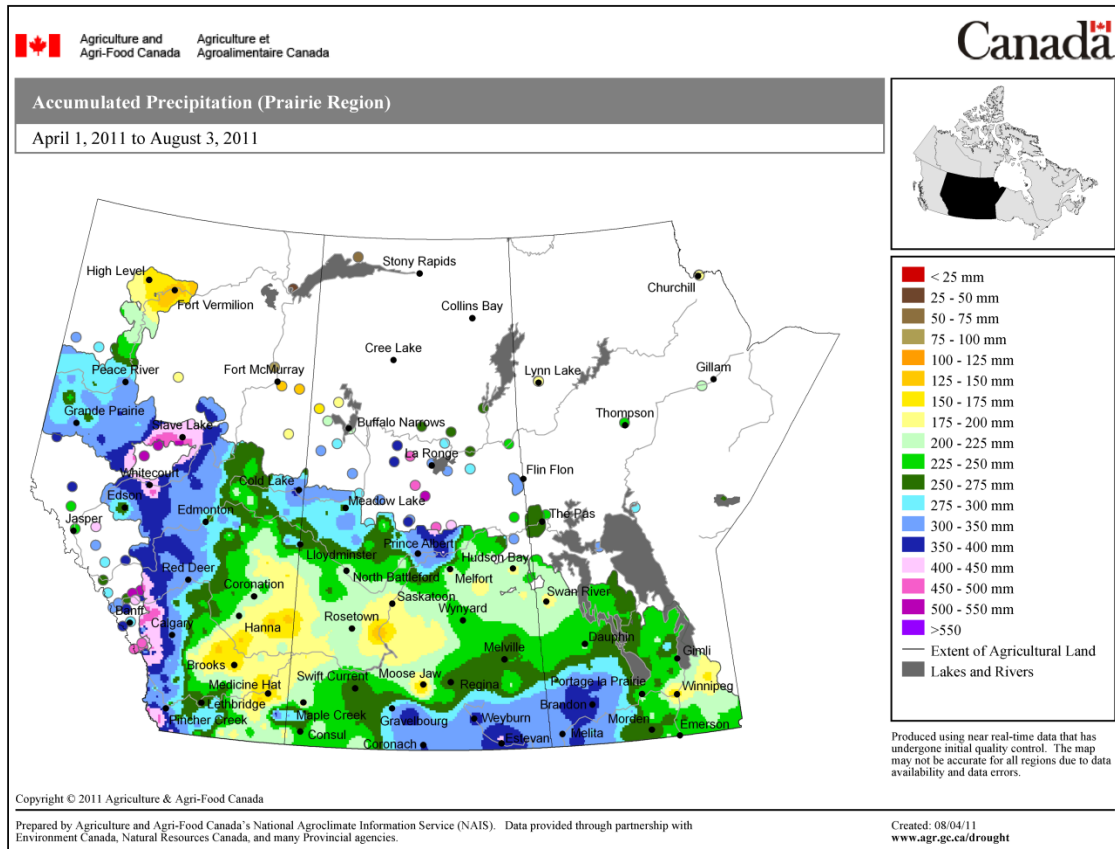
**1. Weather synopsis – Here's the rainfall over the past week.....**



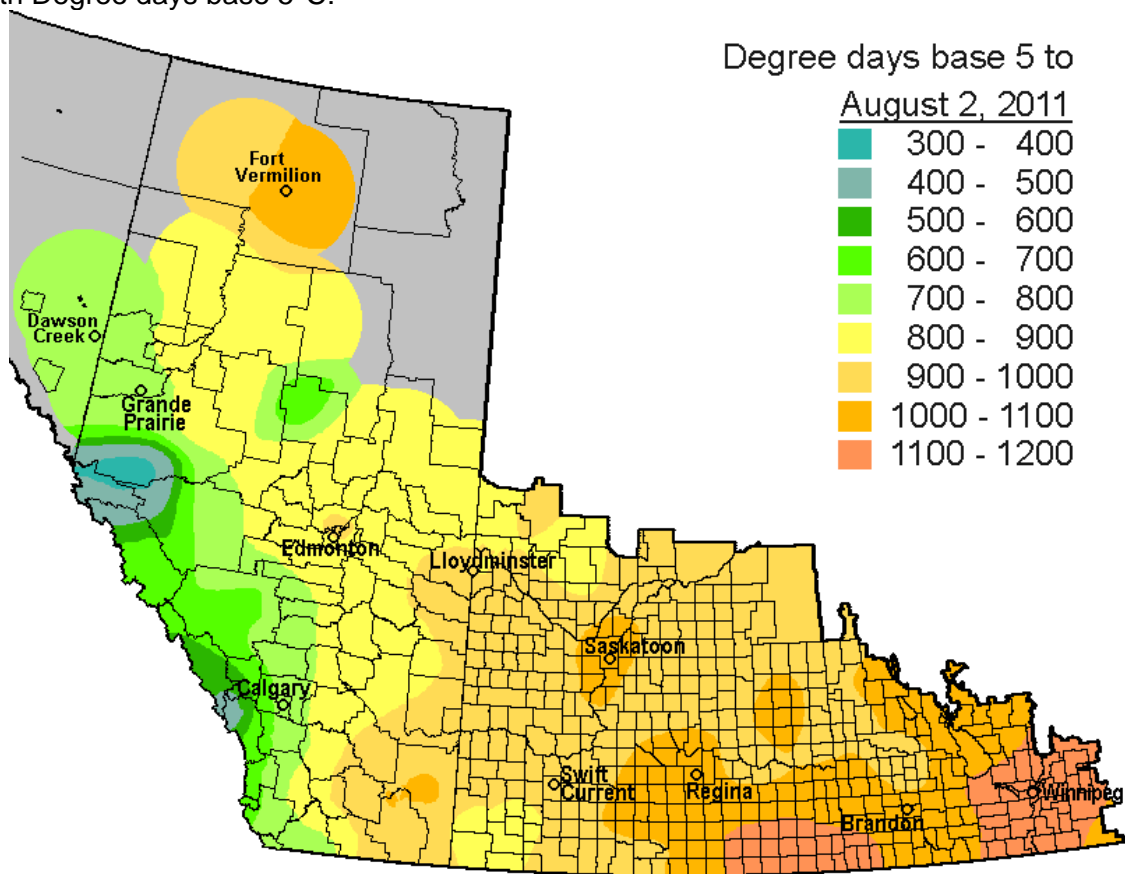
Here's the **Percent of Average Precipitation** (Apr 01- Aug 3, 2011) map for the Prairies...



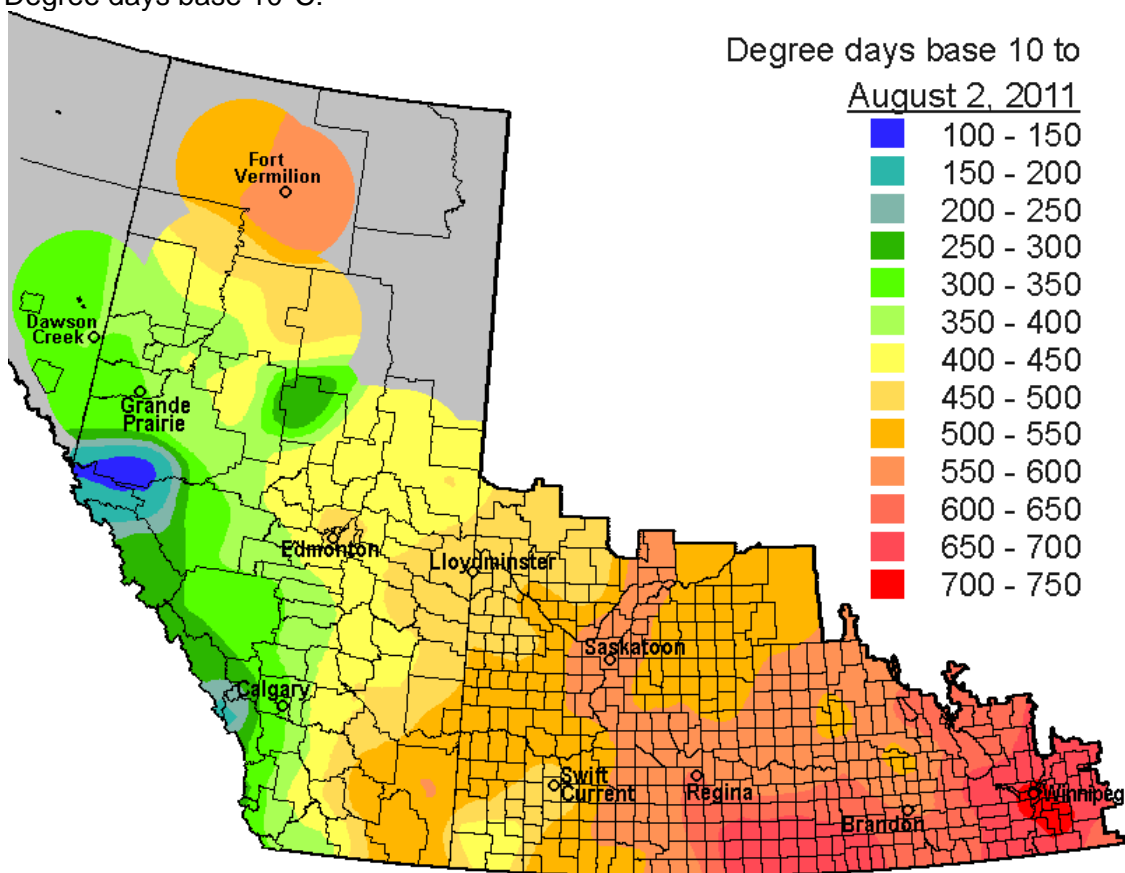
Whereas this is the **accumulated rainfall** received between April 1-Aug 3, 2011.....



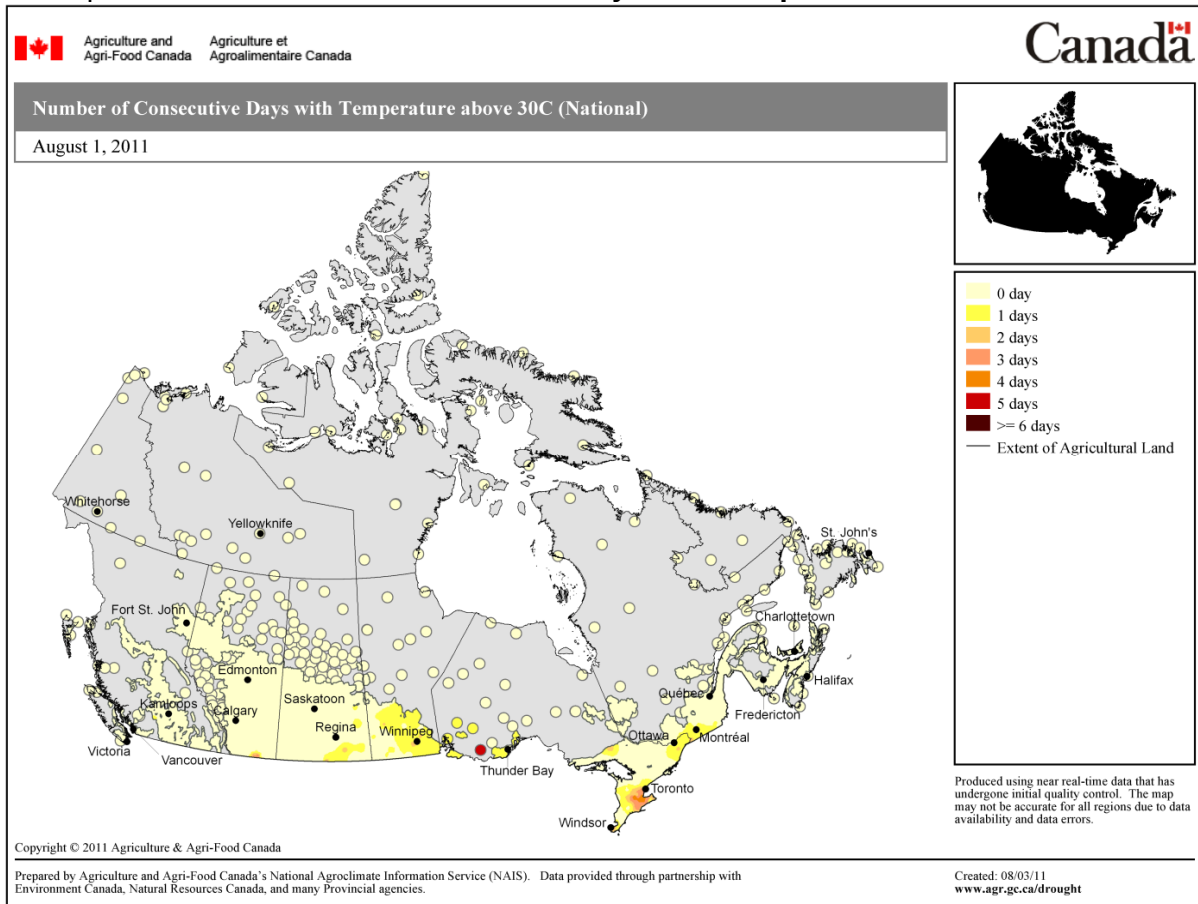
This is an update on the growing season in terms of **heat units**. Here are the maps for across the prairies starting with Degree days base 5°C:



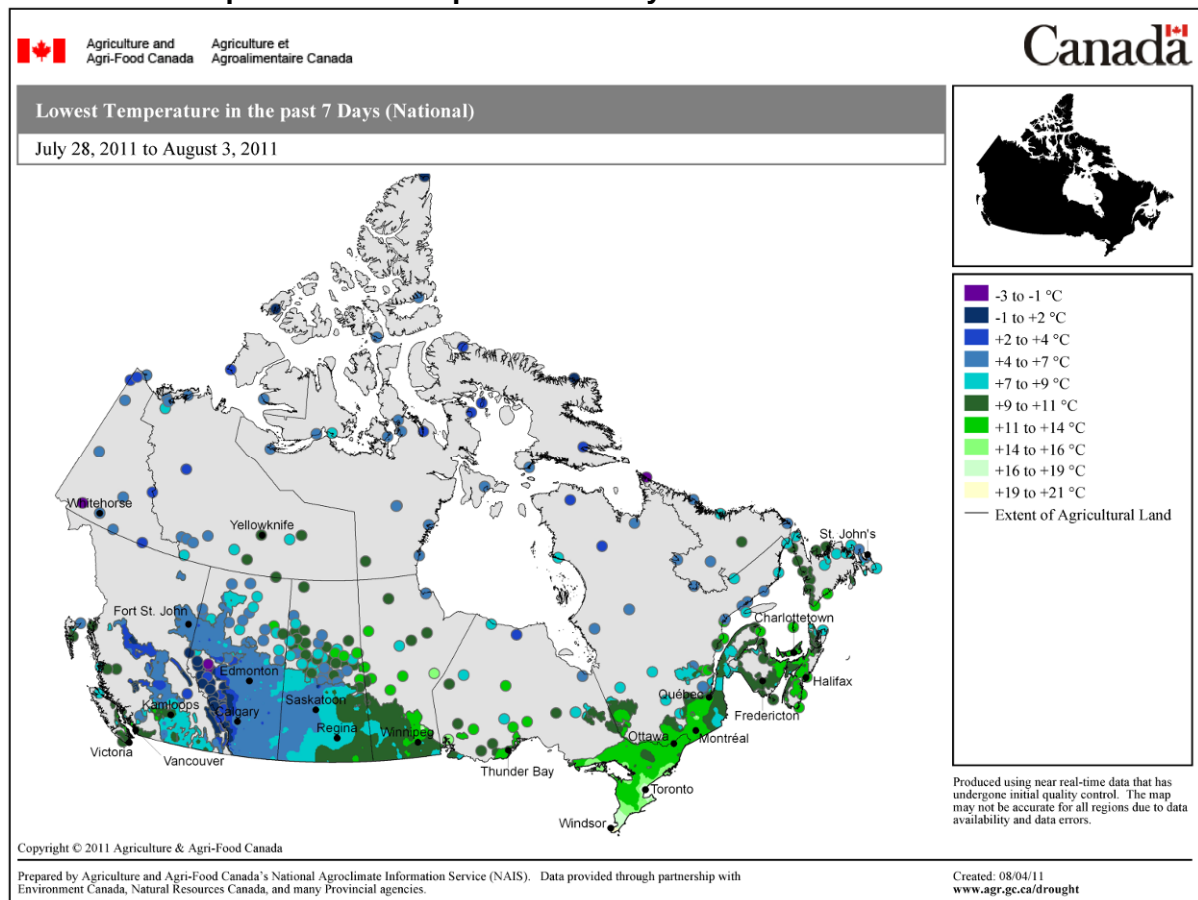
....and for Degree days base 10°C:



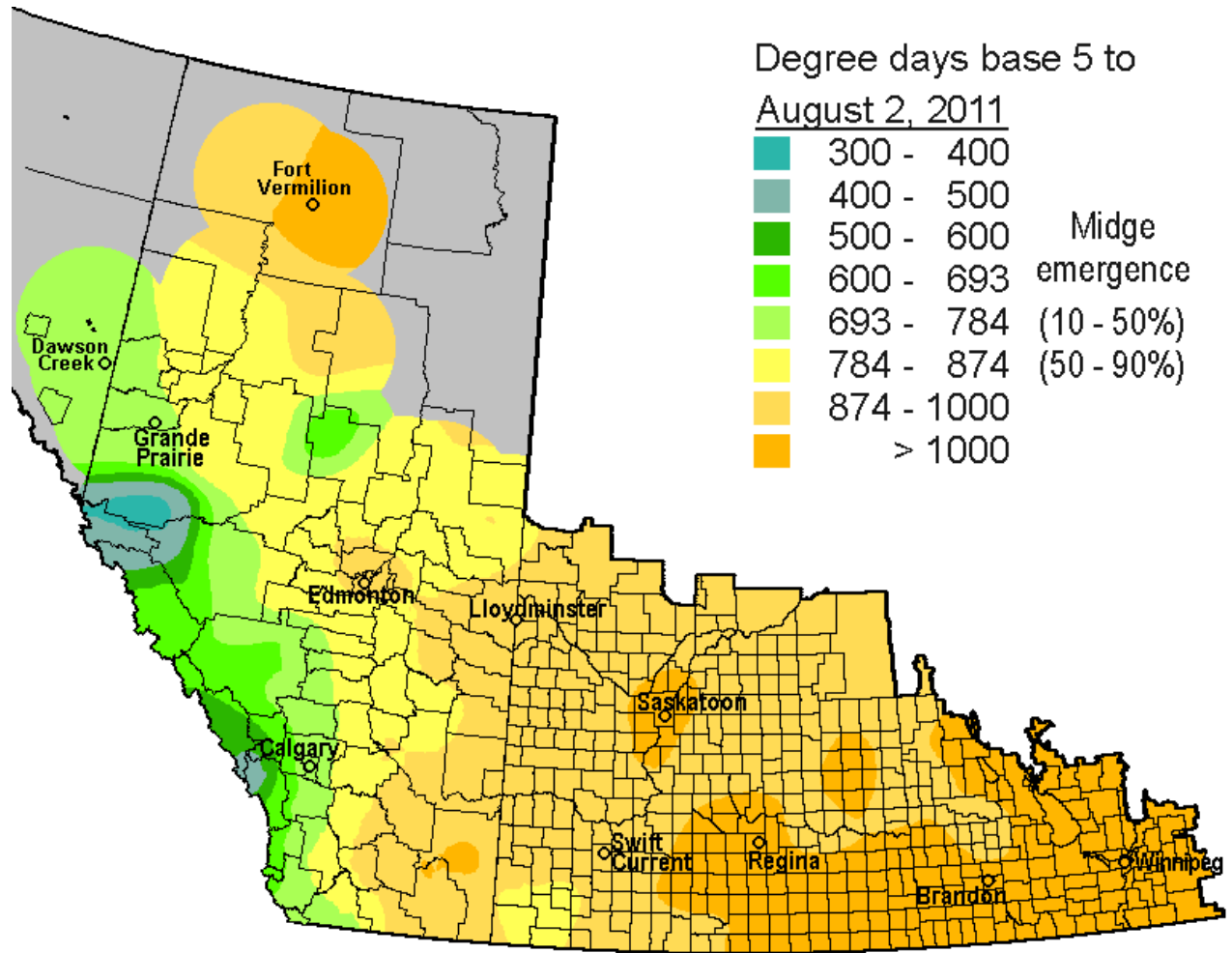
And this is map shows the number of **Consecutive Days with Temperatures Above 30°C....**



Here are the **lowest temperatures these past seven days** across the nation.....



2. **Wheat Midge** (*Sitodiplosis mosellana*). Here's the updated map below – if you've got midge, they're out and about now across the prairies (areas in yellow, gold and orange on the map).



3. **West Nile Virus** (*Culex tarsalis*). This week areas of Manitoba and Saskatchewan accumulated sufficient heat units (areas in red) for *Culex tarsalis*, the mosquito species that can vector West Nile virus. Get your Deet!

